

**STATE OF HAWAII  
DEPARTMENT OF TRANSPORTATION  
HIGHWAYS DIVISION**

**ADDENDUM NO. 1  
FOR  
KUHIO HIGHWAY  
HANAIEI BRIDGE REPAIR  
PROJECT NO. BR-0560(016)**

The following amendments shall be made to the Bid Documents:

**A. PLANS:**

1. Replace Plan Sheet No. 28 with the attached Plan Sheet No. ADD. 28, dated 10/20/22.

**B. SPECIAL PROVISIONS:**

1. Replace the **TABLE OF CONTENTS**, dated 9/27/22 with the attached **TABLE OF CONTENTS**, dated r10/20/22.
2. Replace **SECTION 501 – STEEL STRUCTURES** pages 501-1a to 501-2a, dated 7/15/22 with **SECTION 501 – STEEL STRUCTURES** attached pages 501-1a to 501-2a, dated r10/20/22.
3. Replace **SECTION 645 – WORK ZONE TRAFFIC CONTROL** pages 645-1a to 645-2a, dated 6/23/22 with **SECTION 645 – WORK ZONE TRAFFIC CONTROL** attached pages 645-1a to 645-3a, dated r10/20/22.

**C. FEDERAL WAGE RATES**

1. Replace Federal Wage Rates dated 9/9/22 with the attached Federal Wage Rates dated 10/14/2022.

Attached are responses to questions posted on HiePRO as of October 13, 2022.

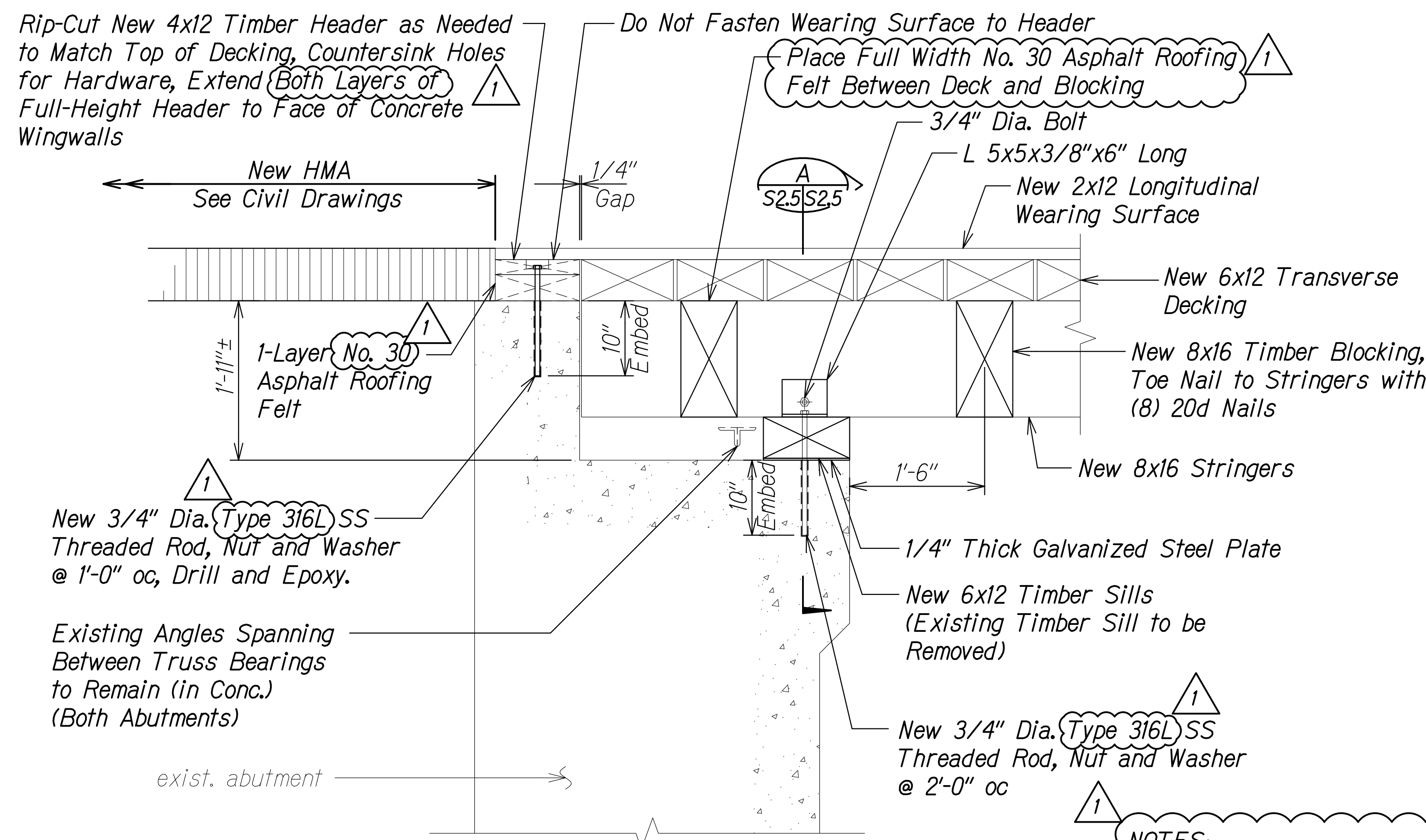
Please acknowledge receipt of this Addendum No. 1 by recording the date of its receipt in the space provided on page P-4 of the Proposal.



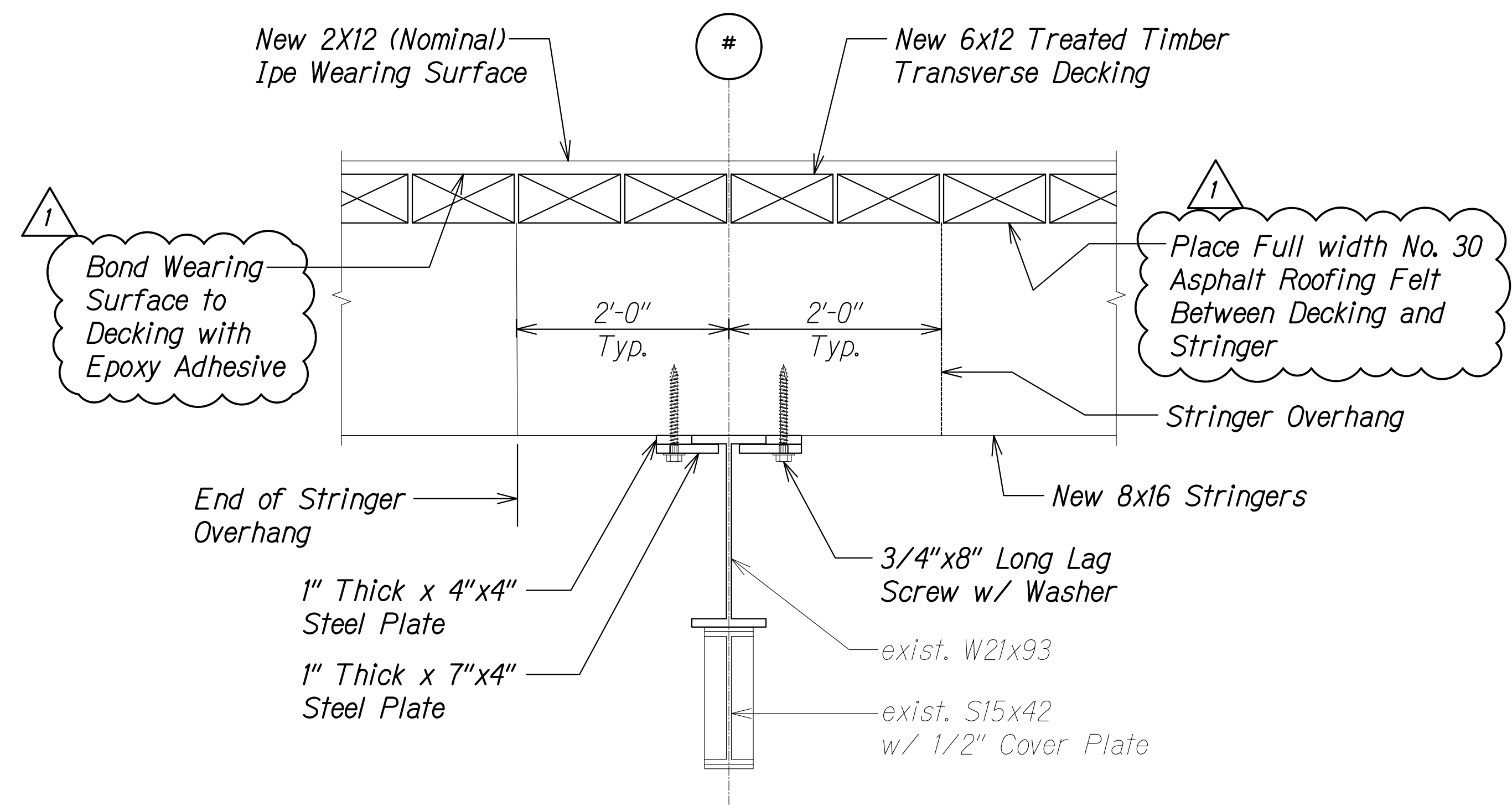
---

JADE T. BUTAY  
Director of Transportation

FED. ROAD DIST. NO.	STATE	FED. AID PROJ. NO.	FISCAL YEAR	SHEET NO.	TOTAL SHEETS
HAWAII	HAW.	BR-0560(016)	2022	ADD. 28	34

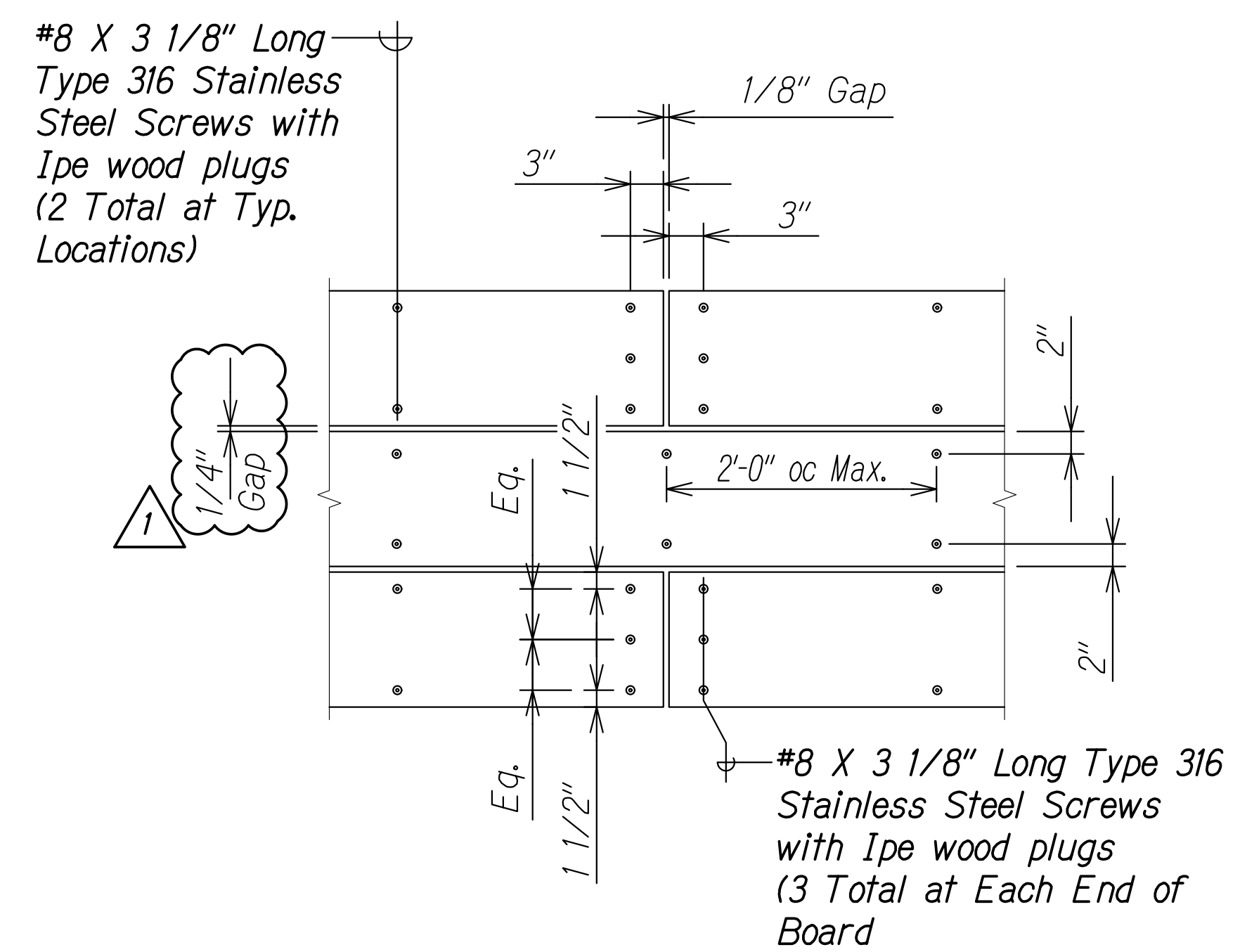


**DECK DETAIL AT ABUTMENT** 1  
Scale: 1" = 1'-0"

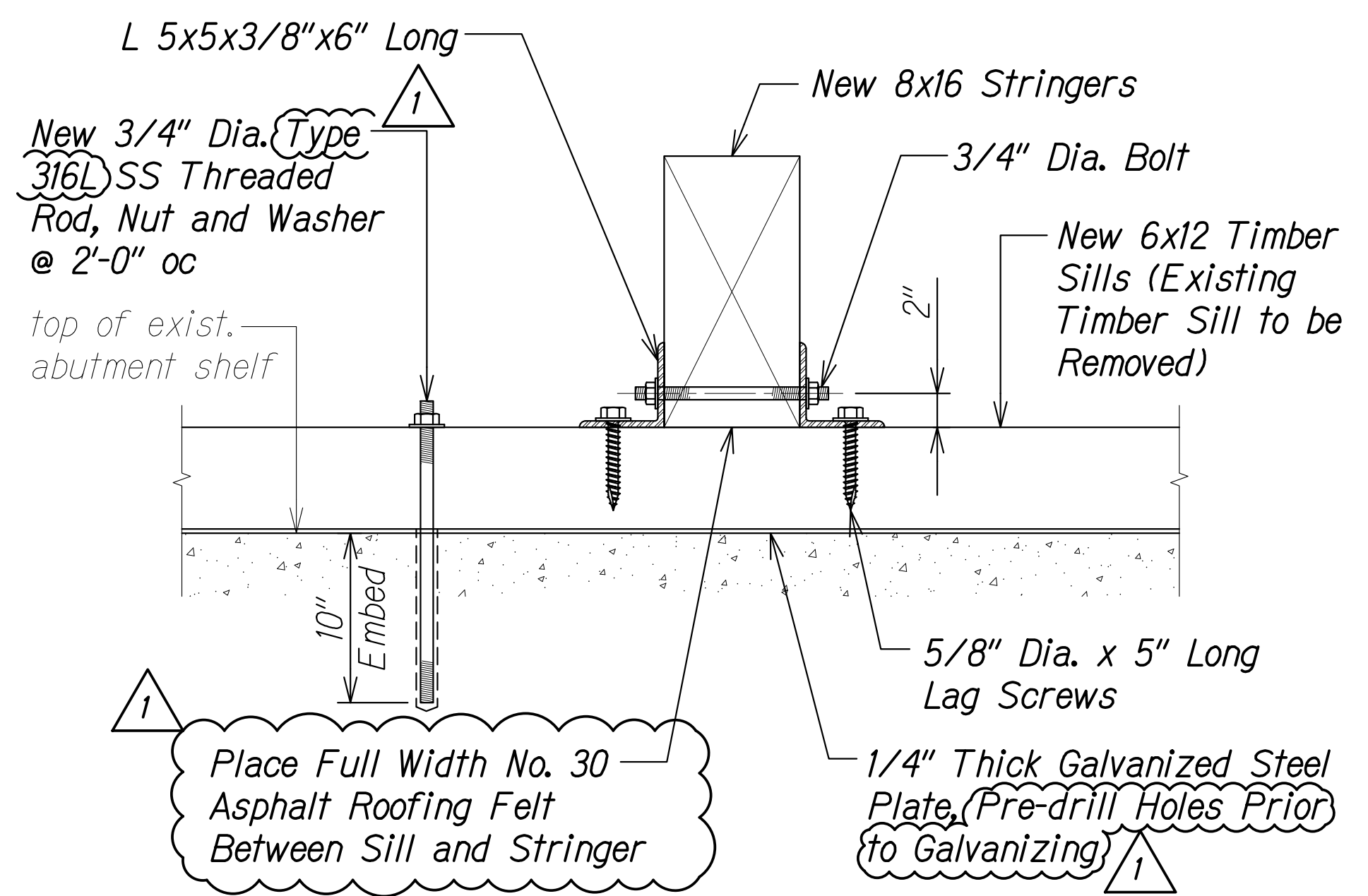


**STRINGER KEEPER PLATE DETAIL** 2  
Scale: 1" = 1'-0"

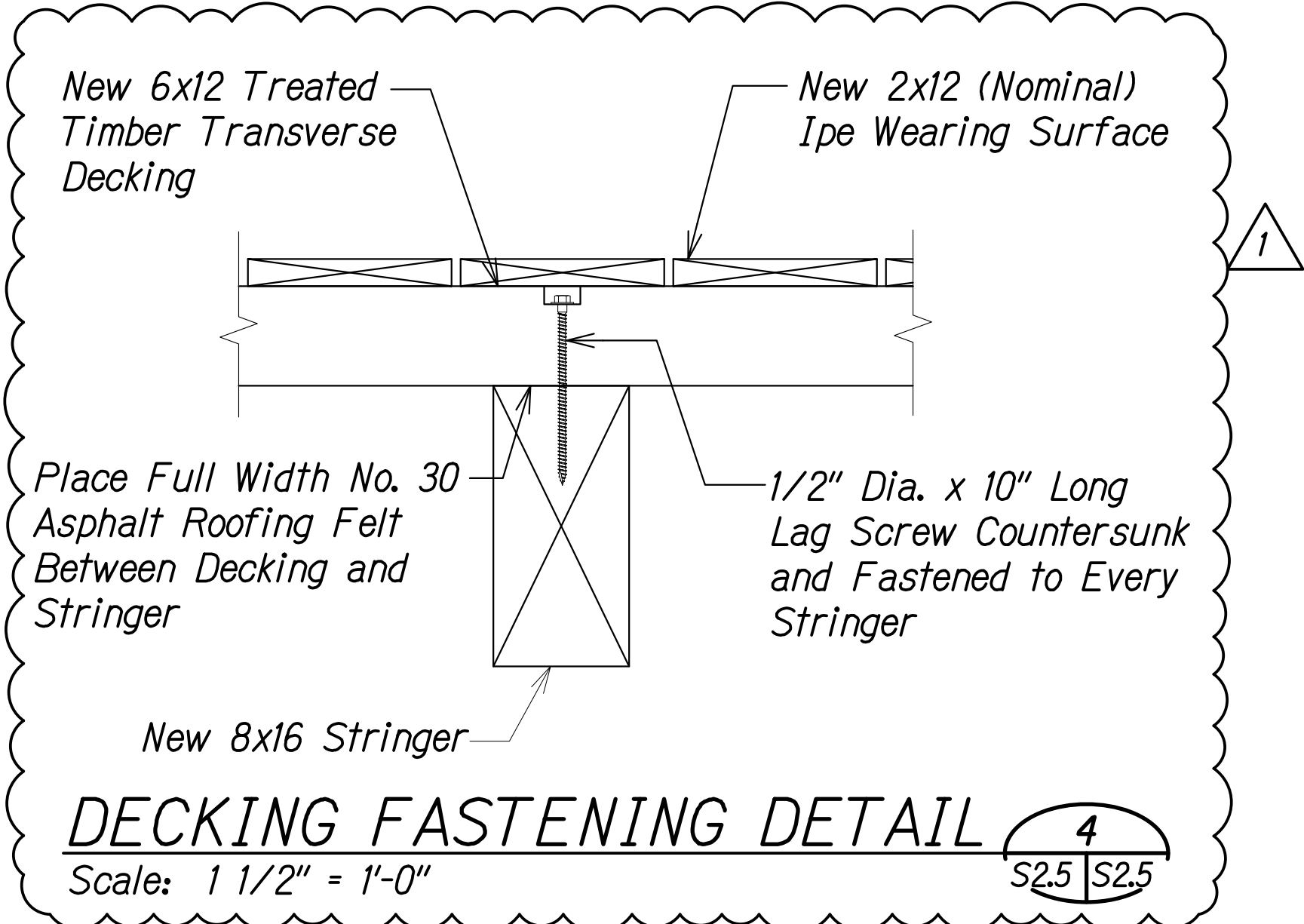
- NOTES:**
- Steel plates, bonding adhesive, roofing felt, and hardware shall be incidental to installation of timber members.
  - All hardware, steel plates, and angles shall be hot-dip galvanized unless otherwise specified as stainless steel.



**WEARING SURFACE FASTENING DETAIL** 3  
Scale: 1" = 1'-0"



**SECTION** A  
Scale: 1 1/2" = 1'-0"



**DECKING FASTENING DETAIL** 4  
Scale: 1 1/2" = 1'-0"

DATE	_____
SURVEY PLOTTED BY	_____
DRAWN BY	_____
TRACED BY	_____
DESIGNED BY	_____
QUANTITIES BY	_____
CHECKED BY	_____
No.	_____

DRAWING NAME: Z:\00 ONGOING\00\_01 PROJECTS\21-009.1-HANAIEI BR. RPR-DOHA.01 CAD\10-17-22 ADD\HTR-50205 REPAIR ADD.DWG PLOT TIME: 10-17-22, 11:38 AM

THIS WORK WAS PREPARED BY ME OR UNDER MY SUPERVISION.  
 SIGNATURE: *Russ S. Miyahara* EXPIRES DATE OF THE LICENSE: 1/30/24

STATE OF HAWAII  
 DEPARTMENT OF TRANSPORTATION  
 HIGHWAYS DIVISION  
**TYPICAL DETAILS AND SECTION**  
**KUHIO HIGHWAY**  
**Hanaie Bridge Repair**  
**FAP Proj. No. BR-0560(016)**  
 Scale: As Noted Date: July 2022  
 SHEET No. S2.5 OF 5 SHEETS

10/20/22	<span style="border: 1px solid black; border-radius: 50%; padding: 2px;">1</span> Addendum 1
DATE	REVISION

## TABLE OF CONTENTS

Notice To Bidders

Instructions for Contractor’s Licensing

Notice of Requirement for Affirmative Action to Ensure  
Equal Employment Opportunity (Executive Order 11246)

Disadvantaged Business Enterprise (DBE) Requirements

Required Federal-Aid Contract Provisions

Special Provisions Title Page

Special Provisions:

<b>DIVISION 100 - GENERAL PROVISIONS</b>		
<b>Section</b>	<b>Description</b>	<b>Pages</b>
101	Terms, Abbreviations, and Definitions	101-1a – 101-13a
102	Bidding Requirements and Conditions	102-1a – 102-8a
103	Award And Execution of Contract	103-1a – 103-5a
104	Scope of Work	104-1a – 104-2a
105	Control of Work	105-1a – 105-3a
106	Material Restrictions and Requirements	106-1a
107	Legal Relations and Responsibility To Public	107-1a – 107-3a
108	Prosecution And Progress	108-1a – 108-25a
109	Measurement and Payment	109-1a – 109-2a

<b>DIVISION 200 - EARTHWORK</b>		
<b>Section</b>	<b>Description</b>	<b>Pages</b>
209	Temporary Water Pollution, Dust, and Erosion Control	209-1a – 209-28a

<b>DIVISION 400 - PAVEMENTS</b>		
<b>Section</b>	<b>Description</b>	<b>Pages</b>
401	Hot Mix Asphalt (HMA) Pavement	401-1a – 401-4a
415	Cold Planing of Existing Pavement	415-1a

<b>DIVISION 500 - STRUCTURES</b>		
<b>Section</b>	<b>Description</b>	<b>Pages</b>
501	Steel Structures	501-1a – 501-2a
502	Timber Structures	502-1a – 502-8a

<b>DIVISION 600 - INCIDENTAL CONSTRUCTION</b>		
<b>Section</b>	<b>Description</b>	<b>Pages</b>
629	Pavement Markings	629-1a – 629-3a
631	Traffic Control, Regulatory, Warning, and Miscellaneous Signs	631-1a
632	Markers	632-1a
636	E-Construction	636-1a – 636-3a
645	Work Zone Traffic Control	645-1a – 645-3a
671	Protection of Endangered Species	671-1a – 671-5a
697	Clean and Paint Existing Bridge Steel	697-1a – 697-13a
699	Mobilization	699-1a

<b>DIVISION 700 - MATERIALS</b>		
<b>Section</b>	<b>Description</b>	<b>Pages</b>
750	Traffic Control Sign and Marker Materials	750-1a – 750-2a

Requirement of Chapter 104, HRS  
Wages and Hours of Employees on Public Works Law

Federal Wage Rates

Proposal Title Page

Proposal ..... P-1 – P-7

Proposal Schedule ..... P-8 - P-11

Disadvantaged Business Enterprise (DBE) Contract Goal Verification and Good Faith Efforts (GFE) Documentation For Construction

Disadvantaged Business Enterprise (DBE) Confirmation and Commitment Agreement  
– Trucking Company

Disadvantaged Business Enterprise (DBE) Confirmation and Commitment Agreement  
– Subcontractor, Manufacturer, or Supplier

Surety Bid Bond

Sample Forms

Contract

Performance Bond (Surety)

Performance Bond

Labor and Material Payment Bond (Surety)

Labor and Material Payment Bond

Disclosure of Lobbying Activities  
Standard Form - LLL and LLL-A

Statement of Compliance  
Form WH-348

Chapter 104, HRS Compliance Certificate

**END OF TABLE OF CONTENTS**

## SECTION 501 - STEEL STRUCTURES

Make the following amendments to said Section:

**(I)** Amend **Section 501.03 Construction (E) Erection (11) Bolted Connections** by revising the second paragraph between lines 218 to 220 to read as follows:

“Use bolts that are long enough to extend entirely through nut, but not by more than  $\frac{1}{2}$  thickness of nut. Use two nuts for bolts in tension.

For hot-dip galvanized bolt assemblies, nuts shall be tapped oversize after the galvanization process. For mechanically galvanized (where specified) bolt assemblies, nuts shall be tapped oversize before the galvanization process. Overtapping tolerances shall be in accordance with ASTM A563.”

**(II)** Amend **Section 501.03 Construction (F) Painting** by revising lines 270 to 461 to read as follows:

**“(1) General.** For cleaning and painting of existing bridge steel, refer to Special Provisions 697. New bridge steel shall be painted in accordance with Special Provisions 697 after it has been fastened or welded to the existing bridge structure.”

**(III)** Amend **Section 501.03 Construction (G) Zinc Coating (2) Repairing Damaged Zinc-Coated Surfaces** by deleting subparagraphs (b), (c), and (d).

**(IV)** Amend **Section 501.03(A)(7)** by adding the words “or AWS D1.1” at the end of the sentence.

**(V)** Amend **Section 501.04 Measurement** between lines 511 to 512 to read as follows:

### **501.04 Measurement.**

(A) Structural Steel Repairs and Replacement of Bolts will be paid on a lump sum basis. Measurement for payment will not apply.

(B) Engineer will only measure Additional Structural Steel Repairs required and requested by Engineer on a Force Account basis in accordance with Subsection 109.06 – Force Account Provisions and Compensation.”

**(VI)** Amend **Section 501.05 Payment** between lines 514 to 529 to read as follows:

**501.05 Payment.** The Engineer will pay for the accepted pay items listed below at contract price per pay unit, as shown in the proposal schedule. Payment will be full compensation for work prescribed in this section and contract documents.

51            Engineer will pay for each of the following pay items when included in the  
52 proposal schedule:

53	<b>Pay Item</b>	<b>Pay Unit</b>
54		
55		
56	Structural Steel Repairs and Replacement of Bolt Assemblies.	Lump Sum
57		
58	Additional Structural Steel Repairs	Force Account"
59		
60		

61

**END OF SECTION 501**

1                                   **SECTION 645 – WORK ZONE TRAFFIC CONTROL**

2  
3    Make the following amendments to said Section:

4  
5    **(I)**     Amend **645.02 – Materials** by revising lines 39 to 48 to read as follows:

6  
7            “Submit at least 30 working days before work starts, 3 sets of FHWA  
8 approval letters certifying compliance with AASHTO Manual for Assessing Safety  
9 Hardware (MASH) for signs, sign supports, barricades, delineators, cones,  
10 vertical panels, concrete barriers with MASH end treatments, and other traffic  
11 control devices.

12  
13            Furnish to Engineer at least 30 working days before work starts, 3 sets of  
14 self-certified MASH compliant letter from vendor for each type of Category 1  
15 traffic control device, as defined in MASH, including single-piece traffic cone,  
16 single-piece drum, tubular marker, and delineator.

17  
18            Use of signs, sign supports, barricades, delineators, cones, vertical  
19 panels, and other traffic control devices that are not certified to be MASH  
20 compliant shall not be used unless a request for a waiver is submitted in writing  
21 and a written wavier is given by the Engineer.”

22  
23    **(II)**     Amend **645.03 - Construction** by adding the following after the sentence on  
24 line 61:

25  
26            “In addition to the traffic control plans, furnish, install and maintain two (2) electronic  
27 message boards (126 inches wide and 76 inches high), locations to be determined  
28 by the Engineer.”

29  
30    **(III)**    Amend **Subsection 645.03(F) Lane Closures** by revising lines 248 to 282  
31 to read as follows:

32  
33            **“(F) Lane Closures.** Lane closures as shown in the traffic control plans  
34 will be allowed:

35  
36                    Kuhio Highway (Ohiki Road to Hanalei Plantation Road)

37  
38                    Sunday:        11:00 p.m. to Midnight  
39                    Weekdays:    Midnight to 5:30 a.m. and 11:00 p.m. to Midnight  
40                    (excluding Friday Evening). No closures are allowed Friday Evening.

41  
42                    Night work and night closures will not be allowed during the  
43 seabird fallout season period (September 15 to December 15).



47 Keep lanes open to traffic and allow flow at posted speed limit during  
48 non-working hours.

49  
50 Exceptions to lane closure hours specified require written acceptance  
51 by the Engineer. No increase in contract price or contract time will be given  
52 for lane closure restrictions specified.

53  
54 The Contractor shall coordinate lane closures with adjacent projects at  
55 no increase to the contract price or contract time.

56  
57 Exceptions to the lane closure hours specified shall require a written  
58 request 10 working days for the Engineer's approval prior to any adjustments  
59 specified."

60  
61 **(IV) Amend Subsection 645.03(G) Advisory Signs** by revising lines 314 to 324  
62 to read as follows:

63  
64 **“(G) Advisory Signs** are not required for this project.”

65  
66  
67 **(V) Amend Subsection 645.03(H) Advertisement** by revising lines 391 to 392  
68 to read as follows:

69  
70 “ Place advertisement for three consecutive days and within one week  
71 before traffic pattern changes, in publication as ordered by the Engineer. In  
72 lieu of the advertisement(s), the Engineer may substitute the use of two  
73 portable changeable message boards and accessories at no additional cost  
74 for three days for each required advertisement.”

75  
76  
77 **(VI) Amend 645.05 – Payment** by revising lines 405 to 428 to read as follows:

78  
79 **“645.05 Payment.** The Engineer will pay for the accepted traffic control,  
80 additional police officers, and additional traffic control devices, and additional  
81 advertisements at the contract price per pay unit, as shown in the proposal  
82 schedule. Payment will be full compensation for the work prescribed in this  
83 section and the contract documents.

84  
85 The Engineer will pay for the following pay items when included in the  
86 proposal schedule:

87

88 Pay Item	Pay Unit
89 Traffic Control _____	Lump Sum
90 Additional Police Officers, Additional Traffic Control 91 Devices, and Additional Advertisements	Force Account

94  
95  
96  
97  
98  
99  
100  
101  
102  
103  
104  
105  
106

An estimated amount for the force account may be allocated in the proposal schedule under “Additional Police Officers, Additional Traffic Control Devices, and Additional Advertisements”, but the actual amount to be paid will be the sum shown on the accepted force account records, whether this sum be more or less than the estimated amount allocated in the proposal schedule.

The Engineer will not pay for request submittals. The Engineer will not consider claims for additional compensation of late submittals or requests by Contractor.”

**END OF SECTION 645**

"General Decision Number: HI20220001 10/14/2022

Superseded General Decision Number: HI20210001

State: Hawaii

Construction Types: Building, Heavy (Heavy and Dredging), Highway and Residential

Counties: Hawaii Statewide.

BUILDING CONSTRUCTION PROJECTS; RESIDENTIAL CONSTRUCTION PROJECTS (consisting of single family homes and apartments up to and including 4 stories); HEAVY AND HIGHWAY CONSTRUCTION PROJECTS AND DREDGING

Note: Contracts subject to the Davis-Bacon Act are generally required to pay at least the applicable minimum wage rate required under Executive Order 14026 or Executive Order 13658. Please note that these Executive Orders apply to covered contracts entered into by the federal government that are subject to the Davis-Bacon Act itself, but do not apply to contracts subject only to the Davis-Bacon Related Acts, including those set forth at 29 CFR 5.1(a)(2)-(60).

If the contract is entered into on or after January 30, 2022, or the contract is renewed or extended (e.g., an option is exercised) on or after January 30, 2022:	. Executive Order 14026 generally applies to the contract. . The contractor must pay all covered workers at least \$15.00 per hour (or the applicable wage rate listed on this wage determination, if it is higher) for all hours spent performing on the contract in 2022.
If the contract was awarded on or between January 1, 2015 and January 29, 2022, and the contract is not renewed or extended on or after January 30, 2022:	. Executive Order 13658 generally applies to the contract. . The contractor must pay all covered workers at least \$11.25 per hour (or the applicable wage rate listed on this wage determination, if it is higher) for all hours spent performing on that contract in 2022.

The applicable Executive Order minimum wage rate will be adjusted annually. If this contract is covered by one of the Executive Orders and a classification considered necessary for performance of work on the contract does not appear on this wage determination, the contractor must still submit a conformance request.

Additional information on contractor requirements and worker protections under the Executive Orders is available at <https://www.dol.gov/agencies/whd/government-contracts>.

Modification Number	Publication Date
0	01/07/2022
1	01/14/2022
2	02/18/2022
3	02/25/2022
4	03/04/2022
5	03/11/2022
6	03/18/2022
7	03/25/2022
8	04/15/2022
9	07/08/2022
10	08/19/2022
11	08/26/2022
12	09/02/2022
13	09/09/2022
14	09/30/2022
15	10/14/2022

ASBE0132-001 06/05/2022

	Rates	Fringes
Asbestos Workers/Insulator Includes application of all insulating materials, protective coverings, coatings and finishes to all types of mechanical systems. Also the application of firestopping material for wall openings and penetrations in walls, floors, ceilings and curtain walls.....	\$ 42.80	25.85

BOIL0627-005 01/01/2021

	Rates	Fringes
BOILERMAKER.....	\$ 37.25	31.25

BRHI0001-001 08/30/2021

	Rates	Fringes
BRICKLAYER Bricklayers and Stonemasons..	\$ 46.46	30.43
Pointers, Caulkers and Weatherproofers.....	\$ 46.71	30.43

BRHI0001-002 08/30/2021

	Rates	Fringes
Tile, Marble & Terrazzo Worker Terrazzo Base Grinders.....	\$ 42.59	32.57
Terrazzo Floor Grinders and Tenders.....	\$ 41.04	32.57
Tile, Marble and Terrazzo Workers.....	\$ 44.40	32.57

CARP0745-001 10/01/2021

	Rates	Fringes
Carpenters:		
Carpenters; Hardwood Floor Layers; Patent Scaffold Erectors (14 ft. and over); Piledrivers; Pneumatic Nailers; Wood Shinglers and Transit and/or Layout Man.....	\$ 51.25	24.84
Millwrights and Machine Erectors.....	\$ 51.50	24.84
Power Saw Operators (2 h.p. and over).....	\$ 51.40	24.84
-----		
CARP0745-002 10/01/2021		

	Rates	Fringes
Drywall and Acoustical Workers and Lathers.....	\$ 51.50	24.84
-----		
ELEC1186-001 08/22/2022		

	Rates	Fringes
Electricians:		
Cable Splicers.....	\$ 60.51	30.90
Electricians.....	\$ 53.55	30.69
Telecommunication worker....	\$ 34.94	13.69
-----		
ELEC1186-002 08/22/2022		

	Rates	Fringes
Line Construction:		
Cable Splicers.....	\$ 60.51	30.90
Groundmen/Truck Drivers.....	\$ 40.16	25.34
Heavy Equipment Operators...	\$ 48.20	28.43
Linemen.....	\$ 53.55	30.69
Telecommunication worker....	\$ 34.94	13.69
-----		
ELEV0126-001 01/01/2022		

	Rates	Fringes
ELEVATOR MECHANIC.....	\$ 65.33	36.885+a+b
<p>a. VACATION: Employer contributes 8% of basic hourly rate for 5 years service and 6% of basic hourly rate for 6 months to 5 years service as vacation pay credit.</p> <p>b. PAID HOLIDAYS: New Year's Day, Memorial Day, Independence Day, Labor Day, Veterans' Day, Thanksgiving Day, the Friday after Thanksgiving Day and Christmas Day.</p>		
-----		
ENGI0003-002 09/03/2018		

	Rates	Fringes
Diver (Aqua Lung) (Scuba)) Diver (Aqua Lung) (Scuba) (over a depth of 30 feet)...	\$ 66.00	31.26
Diver (Aqua Lung) (Scuba)		

(up to a depth of 30 feet)..	\$ 56.63	31.26
Stand-by Diver (Aqua Lung (Scuba).....	\$ 47.25	31.26
Diver (Other than Aqua Lung) Diver (Other than Aqua Lung).....	\$ 66.00	31.26
Diver Tender (Other than Aqua Lung).....	\$ 44.22	31.26
Stand-by Diver (Other than Aqua Lung).....	\$ 47.25	31.26
Helicopter Work Airborne Hoist Operator for Helicopter.....	\$ 45.80	31.26
Co-Pilot of Helicopter.....	\$ 45.98	31.26
Pilot of Helicopter.....	\$ 46.11	31.26
Power equipment operator - tunnel work		
GROUP 1.....	\$ 42.24	31.26
GROUP 2.....	\$ 42.35	31.26
GROUP 3.....	\$ 42.52	31.26
GROUP 4.....	\$ 42.79	31.26
GROUP 5.....	\$ 43.10	31.26
GROUP 6.....	\$ 43.75	31.26
GROUP 7.....	\$ 44.07	31.26
GROUP 8.....	\$ 44.18	31.26
GROUP 9.....	\$ 44.29	31.26
GROUP 9A.....	\$ 44.52	31.26
GROUP 10.....	\$ 44.58	31.26
GROUP 10A.....	\$ 44.73	31.26
GROUP 11.....	\$ 44.88	31.26
GROUP 12.....	\$ 45.24	31.26
GROUP 12A.....	\$ 45.60	31.26
Power equipment operators:		
GROUP 1.....	\$ 41.94	31.26
GROUP 2.....	\$ 42.05	31.26
GROUP 3.....	\$ 42.22	31.26
GROUP 4.....	\$ 42.49	31.26
GROUP 5.....	\$ 42.80	31.26
GROUP 6.....	\$ 43.45	31.26
GROUP 7.....	\$ 43.77	31.26
GROUP 8.....	\$ 43.88	31.26
GROUP 9.....	\$ 43.99	31.26
GROUP 9A.....	\$ 44.22	31.26
GROUP 10.....	\$ 44.28	31.26
GROUP 10A.....	\$ 44.43	31.26
GROUP 11.....	\$ 44.58	31.26
GROUP 12.....	\$ 44.94	31.26
GROUP 12A.....	\$ 45.30	31.26
GROUP 13.....	\$ 42.22	31.26
GROUP 13A.....	\$ 42.49	31.26
GROUP 13B.....	\$ 42.80	31.26
GROUP 13C.....	\$ 43.45	31.26
GROUP 13D.....	\$ 43.77	31.26
GROUP 13E.....	\$ 43.88	31.26

POWER EQUIPMENT OPERATORS CLASSIFICATIONS

GROUP 1: Fork Lift (up to and including 10 tons); Partsman (heavy duty repair shop parts room when needed).

GROUP 2: Conveyor Operator (Handling building material); Hydraulic Monitor; Mixer Box Operator (Concrete Plant).

GROUP 3: Brakeman; Deckhand; Fireman; Oiler; Oiler/Gradechecker; Signalman; Switchman; Highline Cableway

Signalman; Bargeman; Bunkerman; Concrete Curing Machine (self-propelled, automatically applied unit on streets, highways, airports and canals); Leveeman; Roller (5 tons and under); Tugger Hoist.

GROUP 4: Boom Truck or dual purpose "A" Frame Truck (5 tons or less); Concrete Placing Boom (Building Construction); Dinky Operator; Elevator Operator; Hoist and/or Winch (one drum); Straddle Truck (Ross Carrier, Hyster and similar).

GROUP 5: Asphalt Plant Fireman; Compressors, Pumps, Generators and Welding Machines ("Bank" of 9 or more, individually or collectively); Concrete Pumps or Pumpcrete Guns; Lubrication and Service Engineer (Grease Rack); Screedman.

GROUP 6: Boom Truck or Dual Purpose "A" Frame Truck (over 5 tons); Combination Loader/Backhoe (up to and including 3/4 cu. yd.); Concrete Batch Plants (wet or dry); Concrete Cutter, Groover and/or Grinder (self-propelled unit on streets, highways, airports, and canals); Conveyor or Concrete Pump (Truck or Equipment Mounted); Drilling Machinery (not to apply to waterliners, wagon drills or jack hammers); Fork Lift (over 10 tons); Loader (up to and including 3 and 1/2 cu. yds); Lull High Lift (under 40 feet); Lubrication and Service Engineer (Mobile); Maginnis Internal Full Slab Vibrator (on airports, highways, canals and warehouses); Man or Material Hoist; Mechanical Concrete Finisher (Large Clary, Johnson Bidwell, Bridge Deck and similar); Mobile Truck Crane Driver; Portable Shotblast Concrete Cleaning Machine; Portable Boring Machine (under streets, highways, etc.); Portable Crusher; Power Jumbo Operator (setting slip forms, etc., in tunnels); Rollers (over 5 tons); Self-propelled Compactor (single engine); Self-propelled Pavement Breaker; Skidsteer Loader with attachments; Slip Form Pumps (Power driven by hydraulic, electric, air, gas, etc., lifting device for concrete forms); Small Rubber Tired Tractors; Trencher (up to and including 6 feet); Underbridge Personnel Aerial Platform (50 feet of platform or less).

GROUP 7: Crusher Plant Engineer, Dozer (D-4, Case 450, John Deere 450, and similar); Dual Drum Mixer, Extend Lift; Hoist and/or Winch (2 drums); Loader (over 3 and 1/2 cu. yds. up to and including 6 yards.); Mechanical Finisher or Spreader Machine (asphalt), (Barber Greene and similar) (Screedman required); Mine or Shaft Hoist; Mobile Concrete Mixer (over 5 tons); Pipe Bending Machine (pipelines only); Pipe Cleaning Machine (tractor propelled and supported); Pipe Wrapping Machine (tractor propelled and supported); Roller Operator (Asphalt); Self-Propelled Elevating Grade Plane; Slusher Operator; Tractor (with boom) (D-6, or similar); Trencher (over 6 feet and less than 200 h.p.); Water Tanker (pulled by Euclids, T-Pulls, DW-10, 20 or 21, or similar); Winchman (Stern Winch on Dredge).

GROUP 8: Asphalt Plant Operator; Barge Mate (Seagoing); Cast-in-Place Pipe Laying Machine; Concrete Batch Plant (multiple units); Conveyor Operator (tunnel); Deckmate; Dozer (D-6 and similar); Finishing Machine Operator (airports and highways); Gradesetter; Kolman Loader (and similar); Mucking Machine (Crawler-type); Mucking Machine (Conveyor-type); No-Joint Pipe Laying Machine; Portable Crushing and Screening Plant; Power Blade Operator (under 12); Saurman Type Dragline (up to and including 5 yds.);

Stationary Pipe Wrapping, Cleaning and Bending Machine; Surface Heater and Planer Operator, Tractor (D-6 and similar); Tri-Batch Paver; Tunnel Badger; Tunnel Mole and/or Boring Machine Operator Underbridge Personnel Aerial Platform (over 50 feet of platform).

GROUP 9: Combination Mixer and Compressor (gunite); Do-Mor Loader and Adams Elegrader; Dozer (D-7 or equal); Wheel and/or Ladder Trencher (over 6 feet and 200 to 749 h.p.).

GROUP 9A: Dozer (D-8 and similar); Gradesetter (when required by the Contractor to work from drawings, plans or specifications without the direct supervision of a foreman or superintendent); Push Cat; Scrapers (up to and including 20 cu. yds); Self-propelled Compactor with Dozer; Self-Propelled, Rubber-Tired Earthmoving Equipment (up to and including 20 cu. yds) (621 Band and similar); Sheep's Foot; Tractor (D-8 and similar); Tractors with boom (larger than D-6, and similar).

GROUP 10: Chicago Boom; Cold Planers; Heavy Duty Repairman or Welder; Hoist and/or Winch (3 drums); Hydraulic Skooper (Koehring and similar); Loader (over 6 cu. yds. up to and including 12 cu. yds.); Saurman type Dragline (over 5 cu. yds.); Self-propelled, rubber-tired Earthmoving Equipment (over 20 cu. yds. up to and including 31 cu. yds.) (637D and similar); Soil Stabilizer (P & H or equal); Sub-Grader (Gurries or other automatic type); Tractors (D-9 or equivalent, all attachments); Tractor (Tandem Scraper); Watch Engineer.

GROUP 10A: Boat Operator; Cable-operated Crawler Crane (up to and including 25 tons); Cable-operated Power Shovel, Clamshell, Dragline and Backhoe (up to and including 1 cu. yd.); Dozer D9-L; Dozer (D-10, HD41 and similar) (all attachments); Gradall (up to and including 1 cu. yd.); Hydraulic Backhoe (over 3/4 cu. yds. up to and including 2 cu. yds.); Mobile Truck Crane Operator (up to and including 25 tons) (Mobile Truck Crane Driver Required); Self-propelled Boom Type Lifting Device (Center Mount) (up to and including 25 tons) (Grove, Drott, P&H, Pettibone and similar); Trencher (over 6 feet and 750 h.p. or more); Watch Engineer (steam or electric).

GROUP 11: Automatic Slip Form Paver (concrete or asphalt); Band Wagon (in conjunction with Wheel Excavator); Cable-operated Crawler Cranes (over 25 tons but less than 50 tons); Cable-operated Power Shovel, Clamshell, Dragline and Backhoe (over 1 cu. yd. up to 7 cu. yds.); Gradall (over 1 cu. yds. up to 7 cu. yds.); DW-10, 20, etc. (Tandem); Earthmoving Machines (multiple propulsion power units and 2 or more Scrapers) (up to and including 35 cu. yds., "" struck"" m.r.c.); Highline Cableway; Hydraulic Backhoe (over 2 cu. yds. up to and including 4 cu. yds.); Leverman; Lift Slab Machine; Loader (over 12 cu. yds); Master Boat Operator; Mobile Truck Crane Operator (over 25 tons but less than 50 tons); (Mobile Truck Crane Driver required); Pre-stress Wire Wrapping Machine; Self-propelled Boom-type Lifting Device (Center Mount) (over 25 tons m.r.c); Self-propelled Compactor (with multiple-propulsion power units); Single Engine Rubber Tired Earthmoving Machine (with Tandem Scraper); Tandem Cats; Trencher (pulling attached shield).

GROUP 12: Clamshell or Dipper Operator; Derricks; Drill Rigs;



Multi-Propulsion Earthmoving Machines (2 or more Scrapers) (over 35 cu. yds. "struck" m.r.c.); Operators (Derricks, Piledrivers and Cranes); Power Shovels and Draglines (7 cu. yds. m.r.c. and over); Self-propelled rubber-tired Earthmoving equipment (over 31 cu. yds.) (657B and similar); Wheel Excavator (up to and including 750 cu. yds. per hour); Wheel Excavator (over 750 cu. yds. per hour).

GROUP 12A: Dozer (D-11 or similar or larger); Hydraulic Excavators (over 4 cu. yds.); Lifting cranes (50 tons and over); Pioneering Dozer/Backhoe (initial clearing and excavation for the purpose of providing access for other equipment where the terrain worked involves 1-to-1 slopes that are 50 feet in height or depth, the scope of this work does not include normal clearing and grubbing on usual hilly terrain nor the excavation work once the access is provided); Power Blade Operator (Cat 12 or equivalent or over); Straddle Lifts (over 50 tons); Tower Crane, Mobile; Traveling Truss Cranes; Universal, Liebherr, Linden, and similar types of Tower Cranes (in the erection, dismantling, and moving of equipment there shall be an additional Operating Engineer or Heavy Duty Repairman); Yo-Yo Cat or Dozer.

GROUP 13: Truck Driver (Utility, Flatbed, etc.)

GROUP 13A: Dump Truck, 8 cu.yds. and under (water level); Water Truck (up to and including 2,000 gallons).

GROUP 13B: Water Truck (over 2,000 gallons); Tandem Dump Truck, over 8 cu. yds. (water level).

GROUP 13C: Truck Driver (Semi-trailer. Rock Cans, Semi-Dump or Roll-Offs).

GROUP 13D: Truck Driver (Slip-In or Pup).

GROUP 13E: End Dumps, Unlicensed (Euclid, Mack, Caterpillar or similar); Tractor Trailer (Hauling Equipment); Tandem Trucks hooked up to Trailer (Hauling Equipment)

BOOMS AND/OR LEADS (HOURLY PREMIUMS):

The Operator of a crane (under 50 tons) with a boom of 80 feet or more (including jib), or of a crane (under 50 tons) with leads of 100 feet or more, shall receive a per hour premium for each hour worked on said crane (under 50 tons) in accordance with the following schedule:

Booms of 80 feet up to but not including 130 feet or Leads of 100 feet up to but not including 130 feet	0.50
Booms and/or Leads of 130 feet up to but not including 180 feet	0.75
Booms and/or Leads of 180 feet up to and including 250 feet	1.15
Booms and/or Leads over 250 feet	1.50

The Operator of a crane (50 tons and over) with a boom of 180 feet or more (including jib) shall receive a per hour premium for each hour worked on said crane (50 tons and over) in accordance with the following schedule:

Booms of 180 feet up to and including 250 feet	1.25
Booms over 250 feet	1.75

-----  
ENGI0003-004 09/04/2017

	Rates	Fringes
Dredging: (Boat Operators)		
Boat Deckhand.....	\$ 41.22	30.93
Boat Operator.....	\$ 43.43	30.93
Master Boat Operator.....	\$ 43.58	30.93
Dredging: (Clamshell or Dipper Dredging)		
GROUP 1.....	\$ 43.94	30.93
GROUP 2.....	\$ 43.28	30.93
GROUP 3.....	\$ 42.88	30.93
GROUP 4.....	\$ 41.22	30.93
Dredging: (Derricks)		
GROUP 1.....	\$ 43.94	30.93
GROUP 2.....	\$ 43.28	30.93
GROUP 3.....	\$ 42.88	30.93
GROUP 4.....	\$ 41.22	30.93
Dredging: (Hydraulic Suction Dredges)		
GROUP 1.....	\$ 43.58	30.93
GROUP 2.....	\$ 43.43	30.93
GROUP 3.....	\$ 43.28	30.93
GROUP 4.....	\$ 43.22	30.93
GROUP 5.....	\$ 37.88	26.76
Group 5.....	\$ 42.88	30.93
GROUP 6.....	\$ 37.77	26.76
Group 6.....	\$ 42.77	30.93
GROUP 7.....	\$ 36.22	26.76
Group 7.....	\$ 41.22	30.93

CLAMSHELL OR DIPPER DREDGING CLASSIFICATIONS

- GROUP 1: Clamshell or Dipper Operator.
- GROUP 2: Mechanic or Welder; Watch Engineer.
- GROUP 3: Barge Mate; Deckmate.
- GROUP 4: Bargeman; Deckhand; Fireman; Oiler.

HYDRAULIC SUCTION DREDGING CLASSIFICATIONS

- GROUP 1: Leverman.
- GROUP 2: Watch Engineer (steam or electric).
- GROUP 3: Mechanic or Welder.
- GROUP 4: Dozer Operator.
- GROUP 5: Deckmate.
- GROUP 6: Winchman (Stern Winch on Dredge)
- GROUP 7: Deckhand (can operate anchor scow under direction of Deckmate); Fireman; Leveeman; Oiler.

DERRICK CLASSIFICATIONS

- GROUP 1: Operators (Derricks, Piledrivers and Cranes).
- GROUP 2: Saurman Type Dragline (over 5 cubic yards).
- GROUP 3: Deckmate; Saurman Type Dragline (up to and including 5 yards).
- GROUP 4: Deckhand, Fireman, Oiler.

-----  
ENGI0003-044 09/03/2018

	Rates	Fringes
Power Equipment Operators (PAVING)		
Asphalt Concrete Material Transfer.....	\$ 42.92	32.08
Asphalt Plant Operator.....	\$ 43.35	32.08
Asphalt Raker.....	\$ 41.96	32.08
Asphalt Spreader Operator...\$	43.44	32.08
Cold Planer.....	\$ 43.75	32.08
Combination Loader/Backhoe (over 3/4 cu.yd.).....	\$ 41.96	32.08
Combination Loader/Backhoe (up to 3/4 cu.yd.).....	\$ 40.98	32.08
Concrete Saws and/or Grinder (self-propelled unit on streets, highways, airports and canals).....	\$ 42.92	32.08
Grader.....	\$ 43.75	32.08
Laborer, Hand Roller.....	\$ 41.46	32.08
Loader (2 1/2 cu. yds. and under).....	\$ 42.92	32.08
Loader (over 2 1/2 cu. yds. to and including 5 cu. yds.).....	\$ 43.24	32.08
Roller Operator (five tons and under).....	\$ 41.69	32.08
Roller Operator (over five tons).....	\$ 43.12	32.08
Screed Person.....	\$ 42.92	32.08
Soil Stabilizer.....	\$ 43.75	32.08

-----  
\* IRON0625-001 09/01/2022

	Rates	Fringes
Ironworkers:.....	\$ 45.00	39.00
a. Employees will be paid \$.50 per hour more while working in tunnels and coffer dams; \$1.00 per hour more when required to work under or are covered with water (submerged) and when they are required to work on the summit of Mauna Kea, Mauna Loa or Haleakala.		

-----  
LAB00368-001 09/05/2022

	Rates	Fringes
Laborers:		
Driller.....	\$ 41.00	24.25
Final Clean Up.....	\$ 30.45	19.57
Gunite/Shotcrete Operator and High Scaler.....	\$ 40.50	24.25
Laborer I.....	\$ 40.00	24.25
Laborer II.....	\$ 37.40	24.25
Mason Tender/Hod Carrier...\$	40.50	24.25
Powderman.....	\$ 41.00	24.25
Window Washer (bosun chair).\$	39.50	24.25

LABORERS CLASSIFICATIONS

Laborer I: Air Blasting run by electric or pneumatic  
compressor; Asphalt Laborer, Ironer, Raker, Luteman, and  
Handroller, and all types of Asphalt Spreader Boxes;  
Asphalt Shoveler; Assembly and Installation of Multiplates,

Liner Plates, Rings, Mesh, Mats; Batching Plant (portable and temporary); Boring Machine Operator (under streets and sidewalks); Buggymobile; Burning and Welding; Chainsaw, Faller, Logloader, and Bucker; Compactors (Jackson Jumping Jack and similar); Concrete Bucket Dumpman; Concrete Chipping; Concrete Chuteman/Hoseman (pouring concrete) (the handling of the chute from ready-mix trucks for such jobs as walls, slabs, decks, floors, foundations, footings, curbs, gutters, and sidewalks); Concrete Core Cutter (Walls, Floors, and Ceiling); Concrete Grinding or Sanding; Concrete: Hooking on, signaling, dumping of concrete for treme work over water on caissons, pilings, abutments, etc.; Concrete: Mixing, handling, conveying, pouring, vibrating, otherwise placing of concrete or aggregates or by any other process; Concrete: Operation of motorized wheelbarrows or buggies or machines of similar character, whether run by gas, diesel, or electric power; Concrete Placement Machine Operator: operation of Somero Hammerhead, Copperheads, or similar machines; Concrete Pump Machine (laying, coupling, uncoupling of all connections and cleaning of equipment); Concrete and/or Asphalt Saw (Walking or Handtype) (cutting walls or flatwork) (scoring old or new concrete and/or asphalt) (cutting for expansion joints) (streets and ways for laying of pipe, cable or conduit for all purposes); Concrete Shovelers/Laborers (Wet or Dry); Concrete Screeding for Rough Strike-Off: Rodding or striking-off, by hand or mechanical means prior to finishing; Concrete Vibrator Operator; Coring Holes: Walls, footings, piers or other obstructions for passage of pipes or conduits for any purpose and the pouring of concrete to secure the hole; Cribbers, Shorer, Lagging, Sheeting, and Trench Jacking and Bracing, Hand-Guided Lagging Hammer Whaling Bracing; Curbing (Concrete and Asphalt); Curing of Concrete (impervious membrane and form oiler) mortar and other materials by any mode or method; Cut Granite Curb Setter (setting, leveling and grouting of all precast concrete or stone curbs); Cutting and Burning Torch (demolition); Dri Pak-It Machine; Environmental Abatement: removal of asbestos, lead, and bio hazardous materials (EPA and/or OSHA certified); Falling, bucking, yarding, loading or burning of all trees or timber on construction site; Forklift (9 ft. and under); Gas, Pneumatic, and Electric tools; Grating and Grill work for drains or other purposes; Green Cutter of concrete or aggregate in any form, by hand, mechanical means, grindstone or air and/or water; Grout: Spreading for any purpose; Guinea Chaser (Grade Checker) for general utility trenches, sitework, and excavation; Headerboard Man (Asphalt or Concrete); Heat Welder of Plastic (Laborers' AGC certified workers) (when work involves waterproofing for waterponds, artificial lakes and reservoir) heat welding for sewer pipes and fusion of HDPE pipes; Heavy Highway Laborer (Rigging, signaling, handling, and installation of pre-cast catch basins, manholes, curbs and gutters); High Pressure Nozzleman - Hydraulic Monitor (over 100# pressure); Jackhammer Operator; Jacking of slip forms: All semi and unskilled work connected therewithin; Laying of all multi-cell conduit or multi-purpose pipe; Magnesite and Mastic Workers (Wet or Dry)(including mixer operator);Mortar Man; Mortar Mixer (Block, Brick, Masonry, and Plastering); Nozzleman (Sandblasting and/or Water Blasting): handling, placing and operation of nozzle; Operation, Manual or Hydraulic jacking of shields and the use of such other mechanical equipment as may be necessary; Pavement Breakers; Paving, curbing and surfacing of streets, ways, courts, under and overpasses, bridges,

approaches, slope walls, and all other labor connected therewith; Pilecutters; Pipe Accessment in place, bolting and lining up of sectional metal or other pipe including corrugated pipe; Pipelayer performing all services in the laying and installation of pipe from the point of receiving pipe in the ditch until completion of operation, including any and all forms of tubular material, whether pipe, HDPE, metallic or non-metallic, conduit, and any other stationary-type of tubular device used for conveying of any substance or element, whether water, sewage, solid, gas, air, or other product whatsoever and without regard to the nature of material from which tubular material is fabricated; No-joint pipe and stripping of same, Pipewrapper, Caulker, Bander, Kettleman, and men applying asphalt, Laykold, treating Creosote and similar-type materials (6-inch) pipe and over); Piping: resurfacing and paving of all ditches in preparation for laying of all pipes; Pipe laying of lateral sewer pipe from main or side sewer to buildings or structure (except Contactor may direct work be done under proper supervision); Pipe laying, leveling and marking of the joint used for main or side sewers and storm sewers; Laying of all clay, terra cotta, ironstone, vitrified concrete, HDPE or other pipe for drainage; Placing and setting of water mains, gas mains and all pipe including removal of skids; Plaster Mortar Mixer/Pump; Pneumatic Impact Wrench; Portable Sawmill Operation: Choker setters, off bearers, and lumber handlers connected with clearing; Posthole Digger (Hand Held, Gas, Air and Electric); Powderman's Tender; Power Broom Sweepers (Small); Preparation and Compaction of roadbeds for railroad track laying, highway construction, and the preparation of trenches, footings, etc., for cross-country transmission by pipelines, electrical transmission or underground lines or cables (by mechanical means); Raising of structure by manual or hydraulic jacks or other methods and resetting of structure in new locations, including all concrete work; Ramming or compaction; Rigging in connection with Laborers' work (except demolition), Signaling (including the use of walkie talkie) Choke Setting, tag line usage; Tagging and Signaling of building materials into high rise units; Riprap, Stonepaver, and Rock Slinger (includes placement of stacked concrete, wet or dry and loading, unloading, signaling, slinging and setting of other similar materials); Rotary Scarifier (including multiple head concrete chipping Scarifier); Salamander Heater, Drying of plaster, concrete mortar or other aggregate; Scaffold Erector Leadman; Scaffolds: (Swing and hanging) including maintenance thereof; Scaler; Septic Tank/Cesspool and Drain Fields Digger and Installer; Shredder/Chipper (tree branches, brush, etc.); Stripping and Setting Forms; Stripping of Forms: Other than panel forms which are to be re-used in their original form, and stripping of forms on all flat arch work; Tampers (Barko, Wacker, and similar type); Tank Scaler and Cleaners; Tarman; Tree Climbers and Trimmers; Trencher (includes hand-held, Davis T-66 and similar type); Trucks (flatbed up to and including 2 1/2 tons when used in connection with on-site Laborers' work; Trucks (Refuse and Garbage Disposal) (from job site to dump); Vibra-Screed (Bull Float in connection with Laborers' work); Well Points, Installation of or any other dewatering system.

Laborer II: Asphalt Plant Laborer; Boring Machine Tender; Bridge Laborer; Burning of all debris (crates, boxes, packaging waste materials); Chainman, Rodmen, and Grade

Markers; Cleaning, clearing, grading and/or removal for streets, highways, roadways, aprons, runways, sidewalks, parking areas, airports, approaches, and other similar installations; Cleaning or reconditioning of streets, ways, sewers and waterlines, all maintenance work and work of an unskilled and semi-skilled nature; Concrete Bucket Tender (Groundman) hooking and unhooking of bucket; Concrete Forms; moving, cleaning, oiling and carrying to the next point of erection of all forms; Concrete Products Plant Laborers; Conveyor Tender (conveying of building materials); Crushed Stone Yards and Gravel and Sand Pit Laborers and all other similar plants; Demolition, Wrecking and Salvage Laborers: Wrecking and dismantling of buildings and all structures, with use of cutting or wrecking tools, breaking away, cleaning and removal of all fixtures, All hooking, unhooking, signaling of materials for salvage or scrap removed by crane or derrick; Digging under streets, roadways, aprons or other paved surfaces; Driller's Tender; Chuck Tender, Outside Nipper; Dry-packing of concrete (plugging and filling of she-bolt holes); Fence and/or Guardrail Erector: Dismantling and/or re-installation of all fence; Finegrader; Firewatcher; Flagman (Coning, preparing, stablishing and removing portable roadway barricade devices); Signal Men on all construction work defined herein, including Traffic Control Signal Men at construction site; General Excavation; Backfilling, Grading and all other labor connected therewith; Digging of trenches, ditches and manholes and the leveling, grading and other preparation prior to laying pipe or conduit for any purpose; Excavations and foundations for buildings, piers, foundations and holes, and all other construction. Preparation of street ways and bridges; General Laborer: Cleaning and Clearing of all debris and surplus material. Clean-up of right-of-way. Clearing and slashing of brush or trees by hand or mechanical cutting. General Clean up: sweeping, cleaning, wash-down, wiping of construction facility and equipment (other than "Light Clean up (Janitorial) Laborer. Garbage and Debris Handlers and Cleaners. Appliance Handling (job site) (after delivery unloading in storage area); Ground and Soil Treatment Work (Pest Control); Gunite/Shotcrete Operator Tender; Junk Yard Laborers (same as Salvage Yard); Laser Beam "Target Man" in connection with Laborers' work; Layout Person for Plastic (when work involves waterproofing for waterponds, artificial lakes and reservoirs); Limbers, Brush Loaders, and Pilers; Loading, Unloading, carrying, distributing and handling of all rods and material for use in reinforcing concrete construction (except when a derrick or outrigger operated by other than hand power is used); Loading, unloading, sorting, stockpiling, handling and distribution of water mains, gas mains and all pipes; Loading and unloading of all materials, fixtures, furnishings and appliances from point of delivery to stockpile to point of installation; hooking and signaling from truck, conveyance or stockpile; Material Yard Laborers; Pipelayer Tender; Pipewrapper, Caulker, Bander, Kettlemen, and men applying asphalt, Laykold, Creosote, and similar-type materials (pipe under 6 inches); Plasterer Laborer; Preparation, construction and maintenance of roadbeds and sub-grade for all paving, including excavation, dumping, and spreading of sub-grade material; Prestressed or precast concrete slabs, walls, or sections: all loading, unloading, stockpiling, hooking on of such slabs, walls or sections; Quarry Laborers; Railroad, Streetcar, and Rail Transit Maintenance and Repair; Roustabout; Rubbish Trucks in connection with

Building Construction Projects (excluding clearing, grubbing, and excavating); Salvage Yard: All work connected with cutting, cleaning, storing, stockpiling or handling of materials, all cleanup, removal of debris, burning, back-filling and landscaping of the site; Sandblasting Tender (Pot Tender): Hoses and pots or markers; Scaffolds: Erection, planking and removal of all scaffolds used for support for lathers, plasters, brick layers, masons, and other construction trades crafts; Scaffolds: (Specially designed by carpenters) laborers shall tend said carpenter on erection and dismantling thereof, preparation for foundation or mudsills, maintenance; Scraping of floors; Screeds: Handling of all screeds to be reused; handling, dismantling and conveyance of screeds; Setting, leveling and securing or bracing of metal or other road forms and expansion joints; Sheeting Piling/trench shoring (handling and placing of skip sheet or wood plank trench shoring); Ship Scalers; Shipwright Tender; Sign Erector (subdivision traffic, regulatory, and street-name signs); Sloper; Slurry Seal Crews (Mixer Operator, Applicator, Squeegee Man, Shuttle Man, Top Man); Snapping of wall ties and removal of tie rods; Soil Test operations of semi and unskilled labor such as filling sand bags; Striper (Asphalt, Concrete or other Paved Surfaces); Tool Room Attendant (Job Site); Traffic Delineating Device Applicator; Underpinning, lagging, bracing, propping and shoring, loading, signaling, right-of-way clearance along the route of movement, The clearance of new site, excavation of foundation when moving a house or structure from old site to new site; Utilities employees; Water Man; Waterscape/Hardscape Laborers; Wire Mesh Pulling (all concrete pouring operations); Wrecking, stripping, dismantling and handling concrete forms an false work.

-----  
 LAB00368-002 09/05/2022

	Rates	Fringes
Landscape & Irrigation		
Laborers		
GROUP 1.....	\$ 27.25	15.80
GROUP 2.....	\$ 28.25	15.80
GROUP 3.....	\$ 22.15	15.80

LABORERS CLASSIFICATIONS

GROUP 1: Installation of non-potable permanent or temporary irrigation water systems performed for the purposes of Landscaping and Irrigation architectural horticultural work; the installation of drinking fountains and permanent or temporary irrigation systems using potable water for Landscaping and Irrigation architectural horticultural purposes only. This work includes (a) the installation of all heads, risers, valves, valve boxes, vacuum breakers (pressure and non-pressure), low voltage electrical lines and, provided such work involves electrical wiring that will carry 24 volts or less, the installation of sensors, master control panels, display boards, junction boxes, conductors, including all other components for controllers, (b) and metallic (copper, brass, galvanized, or similar) pipe, as well as PVC or other plastic pipe including all work incidental thereto, i.e., unloading, handling and distribution of all pipes fittings, tools, materials and equipment, (c) all soldering work in connection with the

above whether done by torch, soldering iron, or other means; (d) tie-in to main lines, thrust blocks (both precast and poured in place), pipe hangers and supports incidental to installation of the entire irrigation system, (e) making of pressure tests, start-up testing, flushing, purging, water balancing, placing into operation all irrigation equipment, fixtures and appurtenances installed under this agreement, and (f) the fabrication, replacement, repair and servicing of landscaping and irrigation systems. Operation of hand-held gas, air, electric, or self-powered tools and equipment used in the performance of Landscape and Irrigation work in connection with architectural horticulture; Choke-setting, signaling, and rigging for equipment operators on job-site in the performance of such Landscaping and Irrigation work; Concrete work (wet or dry) performed in connection with such Landscaping and Irrigation work. This work shall also include the setting of rock, stone, or riprap in connection with such Landscape, Waterscape, Rockscape, and Irrigation work; Grubbing, pick and shovel excavation, and hand rolling or tamping in connection with the performance of such Landscaping and Irrigation work; Sprigging, handseeding, and planting of trees, shrubs, ground covers, and other plantings and the performance of all types of gardening and horticultural work relating to said planting; Operation of flat bed trucks (up to and including 2 1/2 tons):.

GROUP 2. Layout of irrigation and other non-potable irrigation water systems and the layout of drinking fountains and other potable irrigation water systems in connection with such Landscaping and Irrigation work. This includes the layout of all heads, risers, valves, valve boxes, vacuum breakers, low voltage electrical lines, hydraulic and electrical controllers, and metallic (coppers, brass, galvanized, or similar) pipe, as well as PVC or other plastic pipe. This work also includes the reading and interpretation of plans and specifications in connection with the layout of Landscaping, Rockscape, Waterscape, and Irrigation work; Operation of Hydro-Mulching machines (sprayman and driver), Drillers, Trenchers (riding type, Davis T-66, and similar) and fork lifts used in connection with the performance of such Landscaping and Irrigation work; Tree climbers and chain saw tree trimmers, Sporadic operation (when used in connection with Landscaping, Rockscape, Waterscape, and Irrigation work) of Skid-Steer Loaders (Bobcat and similar), Cranes (Bantam, Grove, and similar), Hoptos, Backhoes, Loaders, Rollers, and Dozers (Case, John Deere, and similar), Water Trucks, Trucks requiring a State of Hawaii Public Utilities Commission Type 5 and/or type 7 license, sit-down type and "gang" mowers, and other self-propelled, sit-down operated machines not listed under Landscape & Irrigation Maintenance Laborer; Chemical spraying using self-propelled power spraying equipment (200 gallon capacity or more).

GROUP 3: Maintenance of trees, shrubs, ground covers, lawns and other planted areas, including the replanting of trees, shrubs, ground covers, and other plantings that did not "take" or which are damaged; provided, however, that re-planting that requires the use of equipment, machinery, or power tools shall be paid for at the rate of pay specified under Landscape and Irrigation Laborer, Group 1; Raking, mowing, trimming, and runing, including the use of "weed eaters", hedge trimmers, vacuums, blowers, and other



hand-held gas, air, electric, or self-powered tools, and the operation of lawn mowers (Note: The operation of sit-down type and "gang" mowers shall be paid for at the rate of pay specified under Landscape & Irrigation Laborer, Group 2); Guywiring, staking, propping, and supporting trees; Fertilizing, Chemical spraying using spray equipment with less than 200 gallon capacity, Maintaining irrigation and sprinkler systems, including the staking, clamping, and adjustment of risers, and the adjustment and/or replacement of sprinkler heads, (Note: the cleaning and gluing of pipe and fittings shall be paid for at the rate of pay specified under Landscape & Irrigation Laborer(Group 1); Watering by hand or sprinkler system and the performance of other types of gardening, yardman, and horticultural-related work.

-----  
LAB00368-003 09/05/2022

	Rates	Fringes
Underground Laborer		
GROUP 1.....	\$ 40.60	24.25
GROUP 2.....	\$ 42.10	24.25
GROUP 3.....	\$ 42.60	24.25
GROUP 4.....	\$ 43.60	24.25
GROUP 5.....	\$ 43.95	24.25
GROUP 6.....	\$ 44.20	24.25
GROUP 7.....	\$ 44.65	24.25

GROUP 1: Watchmen; Change House Attendant.

GROUP 2: Swamper; Brakeman; Bull Gang-Muckers, Trackmen; Dumpmen (any method); Concrete Crew (includes rodding and spreading); Grout Crew; Reboundmen

GROUP 3: Chucktenders and Cabletenders; Powderman (Prime House); Vibratorman, Pavement Breakers

GROUP 4: Miners - Tunnel (including top and bottom man on shaft and raise work); Timberman, Retimberman (wood or steel or substitute materials thereof); Blasters, Drillers, Powderman (in heading); Microtunnel Laborer; Headman; Cherry Pickerman (where car is lifted); Nipper; Grout Gunmen; Grout Pumpman & Potman; Gunite, Shotcrete Gunmen & Potmen; Concrete Finisher (in tunnel); Concrete Screed Man; Bit Grinder; Steel Form Raisers & Setters; High Pressure Nozzleman; Nozzleman (on slick line); Sandblaster-Potman (combination work assignment interchangeable); Tugger

GROUP 5: Shaft Work & Raise (below actual or excavated ground level); Diamond Driller; Gunite or Shotcrete Nozzleman; Rodman; Groundman

GROUP 6: Shifter

GROUP 7: Shifter (Shaft Work & Raiser)

-----  
PAIN1791-001 07/01/2022

	Rates	Fringes
Painters:		
Brush.....	\$ 40.00	30.59
Sandblaster; Spray.....	\$ 40.00	30.59

-----		
PAIN1889-001 07/01/2022		
	Rates	Fringes
Glaziers.....	\$ 41.50	38.37
-----		
PAIN1926-001 02/27/2022		
	Rates	Fringes
Soft Floor Layers.....	\$ 38.77	33.31
-----		
PAIN1944-001 01/02/2022		
	Rates	Fringes
Taper.....	\$ 43.85	32.65
-----		
PLAS0630-001 09/05/2022		
	Rates	Fringes
PLASTERER.....	\$ 45.00	33.58
-----		
PLAS0630-002 08/31/2020		
	Rates	Fringes
Cement Masons:		
Cement Masons.....	\$ 42.65	32.29
Trowel Machine Operators....	\$ 42.80	32.29
-----		
PLUM0675-001 07/03/2022		
	Rates	Fringes
Plumber, Pipefitter, Steamfitter & Sprinkler Fitter....	\$ 50.13	29.05
-----		
ROOF0221-001 09/05/2021		
	Rates	Fringes
Roofers (Including Built Up, Composition and Single Ply).....	\$ 42.55	20.78
-----		
SHEE0293-001 02/27/2022		
	Rates	Fringes
Sheet metal worker.....	\$ 46.22	30.64
-----		
* SUHI1997-002 09/15/1997		
	Rates	Fringes
Drapery Installer.....	\$ 13.60 **	1.20
FENCE ERECTOR (Chain Link Fence).....	\$ 9.33 **	1.65
-----		

WELDERS - Receive rate prescribed for craft performing operation to which welding is incidental.

\*\*\*\*\*  
\*\* Workers in this classification may be entitled to a higher minimum wage under Executive Order 14026 (\$15.00) or 13658 (\$11.25). Please see the Note at the top of the wage determination for more information.

Note: Executive Order (EO) 13706, Establishing Paid Sick Leave for Federal Contractors applies to all contracts subject to the Davis-Bacon Act for which the contract is awarded (and any solicitation was issued) on or after January 1, 2017. If this contract is covered by the EO, the contractor must provide employees with 1 hour of paid sick leave for every 30 hours they work, up to 56 hours of paid sick leave each year. Employees must be permitted to use paid sick leave for their own illness, injury or other health-related needs, including preventive care; to assist a family member (or person who is like family to the employee) who is ill, injured, or has other health-related needs, including preventive care; or for reasons resulting from, or to assist a family member (or person who is like family to the employee) who is a victim of, domestic violence, sexual assault, or stalking. Additional information on contractor requirements and worker protections under the EO is available at <https://www.dol.gov/agencies/whd/government-contracts>.

Unlisted classifications needed for work not included within the scope of the classifications listed may be added after award only as provided in the labor standards contract clauses (29CFR 5.5 (a) (1) (ii)).

-----  
The body of each wage determination lists the classification and wage rates that have been found to be prevailing for the cited type(s) of construction in the area covered by the wage determination. The classifications are listed in alphabetical order of ""identifiers"" that indicate whether the particular rate is a union rate (current union negotiated rate for local), a survey rate (weighted average rate) or a union average rate (weighted union average rate).

#### Union Rate Identifiers

A four letter classification abbreviation identifier enclosed in dotted lines beginning with characters other than ""SU"" or ""UAVG"" denotes that the union classification and rate were prevailing for that classification in the survey. Example: PLUM0198-005 07/01/2014. PLUM is an abbreviation identifier of the union which prevailed in the survey for this classification, which in this example would be Plumbers. 0198 indicates the local union number or district council number where applicable, i.e., Plumbers Local 0198. The next number, 005 in the example, is an internal number used in processing the wage determination. 07/01/2014 is the effective date of the most current negotiated rate, which in this example is July 1, 2014.

Union prevailing wage rates are updated to reflect all rate changes in the collective bargaining agreement (CBA) governing this classification and rate.

## Survey Rate Identifiers

Classifications listed under the ""SU"" identifier indicate that no one rate prevailed for this classification in the survey and the published rate is derived by computing a weighted average rate based on all the rates reported in the survey for that classification. As this weighted average rate includes all rates reported in the survey, it may include both union and non-union rates. Example: SULA2012-007 5/13/2014. SU indicates the rates are survey rates based on a weighted average calculation of rates and are not majority rates. LA indicates the State of Louisiana. 2012 is the year of survey on which these classifications and rates are based. The next number, 007 in the example, is an internal number used in producing the wage determination. 5/13/2014 indicates the survey completion date for the classifications and rates under that identifier.

Survey wage rates are not updated and remain in effect until a new survey is conducted.

## Union Average Rate Identifiers

Classification(s) listed under the UAVG identifier indicate that no single majority rate prevailed for those classifications; however, 100% of the data reported for the classifications was union data. EXAMPLE: UAVG-OH-0010 08/29/2014. UAVG indicates that the rate is a weighted union average rate. OH indicates the state. The next number, 0010 in the example, is an internal number used in producing the wage determination. 08/29/2014 indicates the survey completion date for the classifications and rates under that identifier.

A UAVG rate will be updated once a year, usually in January of each year, to reflect a weighted average of the current negotiated/CBA rate of the union locals from which the rate is based.

---

## WAGE DETERMINATION APPEALS PROCESS

1.) Has there been an initial decision in the matter? This can be:

- \* an existing published wage determination
- \* a survey underlying a wage determination
- \* a Wage and Hour Division letter setting forth a position on a wage determination matter
- \* a conformance (additional classification and rate) ruling

On survey related matters, initial contact, including requests for summaries of surveys, should be with the Wage and Hour National Office because National Office has responsibility for the Davis-Bacon survey program. If the response from this initial contact is not satisfactory, then the process described in 2.) and 3.) should be followed.

With regard to any other matter not yet ripe for the formal process described here, initial contact should be with the Branch of Construction Wage Determinations. Write to:

Branch of Construction Wage Determinations  
Wage and Hour Division

U.S. Department of Labor  
200 Constitution Avenue, N.W.  
Washington, DC 20210

2.) If the answer to the question in 1.) is yes, then an interested party (those affected by the action) can request review and reconsideration from the Wage and Hour Administrator (See 29 CFR Part 1.8 and 29 CFR Part 7). Write to:

Wage and Hour Administrator  
U.S. Department of Labor  
200 Constitution Avenue, N.W.  
Washington, DC 20210

The request should be accompanied by a full statement of the interested party's position and by any information (wage payment data, project description, area practice material, etc.) that the requestor considers relevant to the issue.

3.) If the decision of the Administrator is not favorable, an interested party may appeal directly to the Administrative Review Board (formerly the Wage Appeals Board). Write to:

Administrative Review Board  
U.S. Department of Labor  
200 Constitution Avenue, N.W.  
Washington, DC 20210

4.) All decisions by the Administrative Review Board are final.

=====

END OF GENERAL DECISIO"

**Responses to HiePRO Questions for solicitation B23000601  
Kuhio Highway Hanalei Bridge Repair  
Project No. BR-0560(016)**

**1. Are Post mounted Advisory Boards (Notice to Motorist) Required Per Spec 645.03(G) Advisory Signs. Submit advisory sign shop drawings. Construct, install, maintain, and remove two advisory signs as ordered by the Engineer. Place signs at locations designated by the Engineer. Provide signs, minimum 8 feet wide by 4 feet high, with black letters on orange background, and with three 4,00 pounds/foot flanged channel posts for each sign? If so, can you please provide the locations?**

RESPONSE: See revised special provisions section 645 dated r10/20/22

**2. Can used signs, posts and hardware be used for Advisory and Construction Signs if they are required for the project?**

RESPONSE: No

**3. Plans Page 21, Structural General Notes, 4, F, states that the work platform "shall not extend more than 20'-0" across the river at any given time" Is the 20' maximum requirement meant to restrict loading on the bridge or is the intent to minimize the impact to the clearance under the bridge?**

RESPONSE: Both. The work platform cannot completely restrict river use. Additionally, due to the load restrictions placed on the work platform supported by the bridge superstructure, it is unlikely that the work platform will realistically be much larger than stipulated without being overweight. In the end, the Contractor is responsible for determining the size and design for the work platform and needs to hire a Structural Engineer to substantiate any work plan.

**4. May I get an attendees list from the pre-bid meeting?**

RESPONSE: Attendees list from the pre-bid meeting are included in Addendum No. 1

**5. Specification Section 501 – Steel Structures, Paragraph II, (1) references," Special Provisions 675 Preparation and Coating of Galvanized Steel Components". Special Provisions 675 is not in the project documents, nor is it shown on the Hawaii DOT/Federal Projects Special Provisions for 2005 Standard Specifications website. Can Special Provision Section 675 be provided?**

RESPONSE: See revised special provisions section 501 dated r10/20/22

**6. There does not appear to be any details on how the New 6"x12" Transverse Decking is to be attached to the New 8"x16" Stringers. Can a detail be provided on how these items are to be fastened together?**

RESPONSE: See revised plan sheet ADD. 28

**7. Are all new wood components to be rough sawn lumber, except the new Ipe 2"x12" Wearing Surface?**

RESPONSE: Douglas Fir members can be either dimensional lumber or rough sawn lumber so long as they meet the grading and treatment requirements of the specs/plans. Ipe lumber shall be dimensional lumber. Any variations between the finish deck elevation and the approach grades shall be accommodated by adjusting the headers and the new HMA pavement.

**8. Are there any wood preservative requirements for the Ipe Wearing Surface?**

RESPONSE: No

## MINUTES OF THE PRE-BID MEETING

**PROJECT:** Kuhio Highway Hanalei Bridge Repair  
District of Hanalei, Island of Kauai

**PROJECT NO.:** BR-0560(016)

**LOCATION:** Microsoft Teams Video Conference

**DATE & TIME:** October 6, 2022 at 10:00 A.M.

**IN ATTENDANCE:**

Eric Fujikawa	HDOT – HWY-K
Daniel Williams	HDOT – OCR
Gary Iwamoto	KSF, Inc.
Russ Miyahara	KSF, Inc.
Gerald Andrade	WSP USA, Inc.
Nick Schmid	Abhe & Svoboda, Inc.
Don Easter	Purcell Painting and Coatings
Alyssa Carveiro	Earthworks Pacific, Inc.

The meeting started at 10:00 A.M. Eric Fujikawa began the meeting with an introduction and gave a brief overview of the project.

Anything said at this meeting is for clarification purposes only, the bid documents shall govern over anything said today and discrepancies shall be clarified by addendum.

All questions that resulted from this meeting were directed to be submitted through HiePRO and will be formally answered through the addendum.

The DBE goal of the project is 4.0%. Dan Williams provided an overview of DBE forms and requirements when submitting a bid. Links were provided to the bidder registration form (<https://hidot.hawaii.gov/administration/files/2019/03/Bidder-Registration-Fillable-Form.pdf>) and the DBE system website (<https://hdot.dbesystem.com/>).

No questions were raised at the meeting:

The pre-bid meeting was adjourned at 10:13 A.M.

The minutes of the meeting will be distributed in Addendum No. 1 of the Contract Plans. Contractors will be notified via HiePRO when the addendum will be available.